

# Road Closures & Diversions

Curepipe

Lighting up  
your Town with  
**Metro Express**

Issue Date: 27 Dec 2019

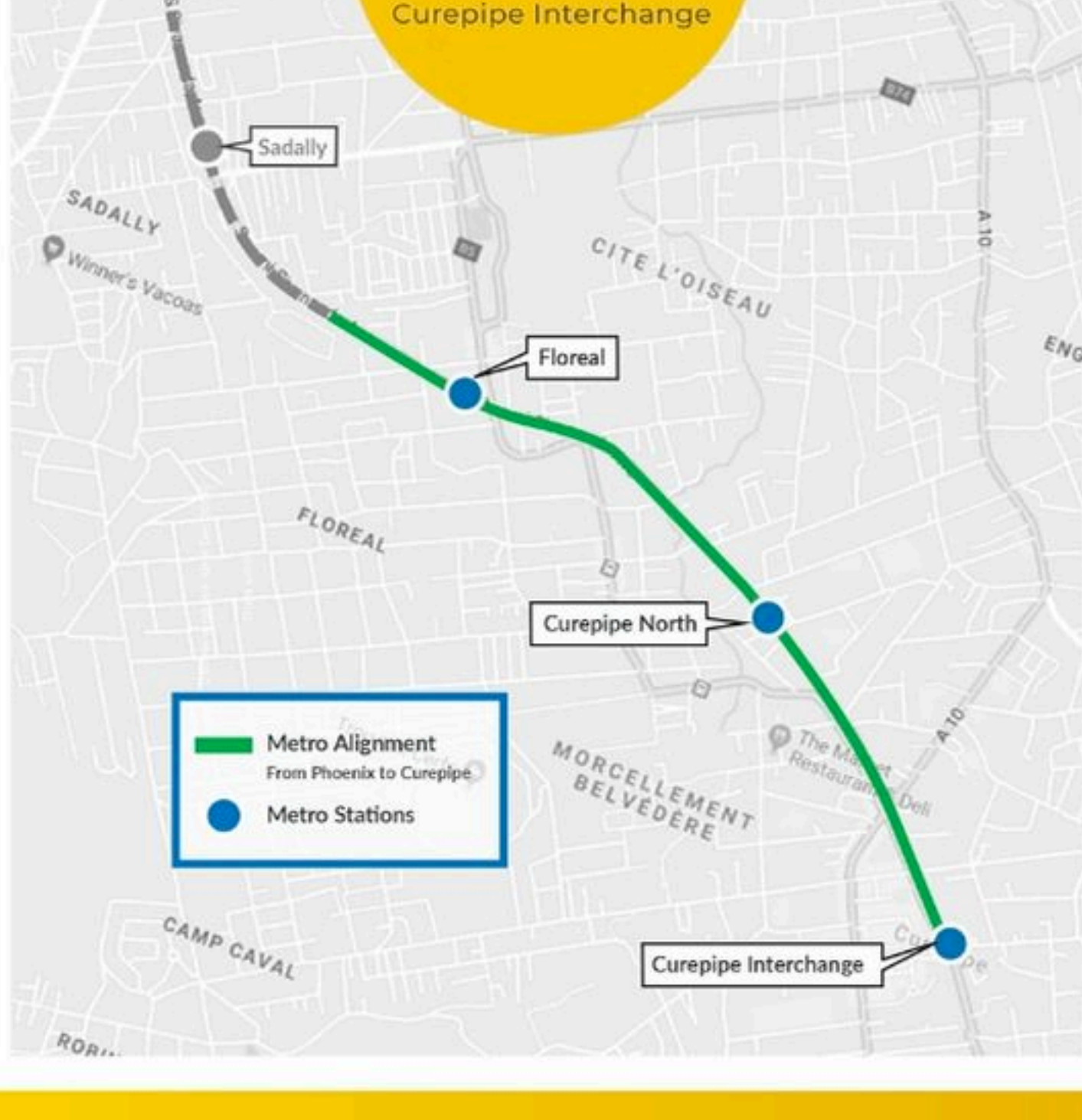


**LARSEN & TOUBRO**



## Metro Alignment

From  
Floreal  
to  
Curepipe Interchange



## TRAFFIC MANAGEMENT HIGHLIGHTS

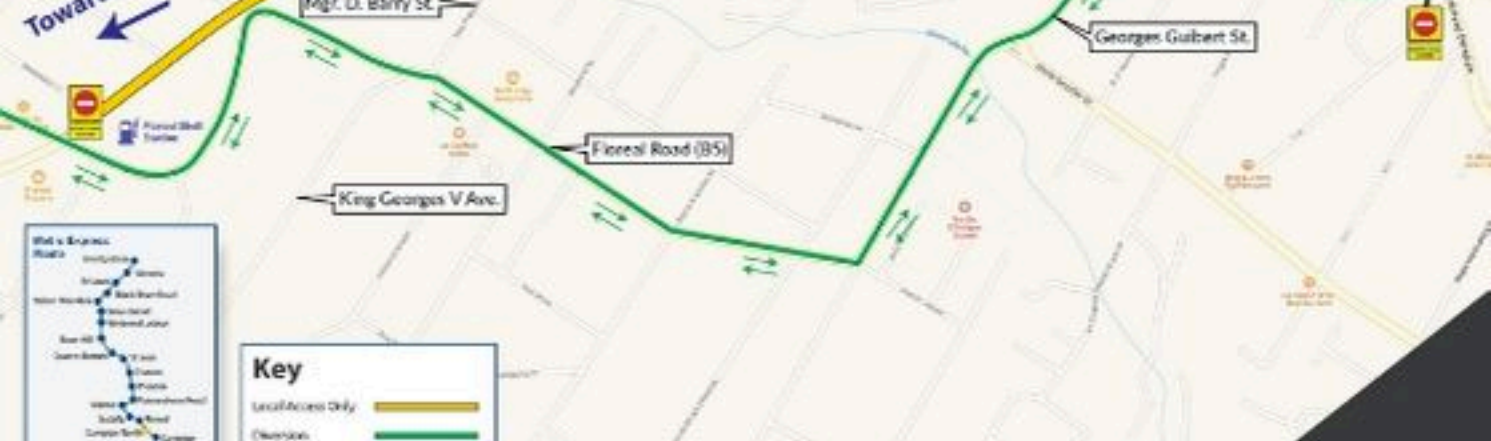
1

### Closure of Sivananda Avenue in both directions

Starting 03 Jan 2020 for a period of 12 months

- Both lanes of Swami Sivananda Avenue between Phoenix-Plaisance Rd. (A10) and Floreal Rd. (B5) will be closed to traffic
- Traffic along Swami Sivananda Avenue at its junction with Phoenix-Plaisance Road and heading towards Floreal will be diverted along Georges Guibert Street and Floreal Road to join Sivananda Avenue at its junction near Shell Filling Station
- Traffic along Floreal Road heading towards Curepipe through Swami Sivananda Avenue will be required to continue to proceed along Floreal Road to join D'Epinay Avenue and through to Curepipe
- Necessary provision will also be made to allow for local access
  - (i) Along the closed stretch of Sivananda Avenue and
  - (ii) Towards Charles Regnaud Street through D'Epinay Avenue.

## Metro Express- Swami Sivananda Avenue Diversion



Curepipe

## TRANSFORMATION

WITH **METRO EXPRESS**

The introduction of the Metro Express will integrate and upgrade the town life in Curepipe



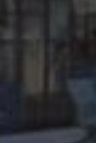
### Elevated tracks

The alignment at Curepipe will be elevated to seamlessly integrate the alignment and the road configuration



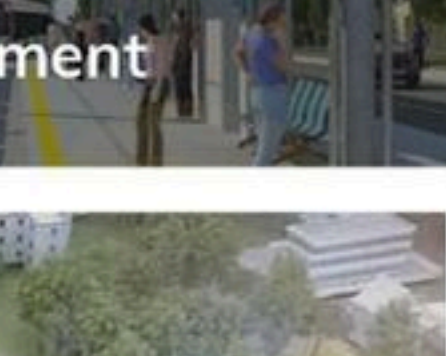
### Bus Interchange

Curepipe station will be among the 4 bus interchanges of the alignment from Port Louis to Curepipe



### Curepipe Station

The metro station at Curepipe will be a state-of-the-art elevated station combined with the bus interchange



## Curepipe Alignment



3D Illustration - Curepipe Elevated Station



3D Illustration - Curepipe Bus Interchange



3D Illustration - Curepipe Elevated Structure

## ABOUT METRO EXPRESS

### KEY INFORMATION

The 26km track, with 19 stations of the Metro Express will be serviced by 18 world class Light Rail Vehicles (LRVs) which are 100% bi-directional, 100% low-floor, fully air-conditioned and of URBOS 100 3rd Generation model.

### ABOUT L&T

L&T Construction, the construction arm of L&T which is constructing the Mauritius Metro, is India's largest construction organization and ranked among the world's top 30 contractors. Over the past seven decades, L&T Construction has been transforming cityscapes and



26 km Track



100% Low-floor LRVs



4 Bus Interchanges



19 Stations



Safety, Comfort & Punctuality

The introduction of the  
**Metro Express**  
will integrate and  
upgrade the town life  
in Curepipe

FOR FEEDBACK  
& QUERIES

**L&T Information Desk**

Care du sud, Curepipe (Opposite market)

☎ 58 98 00 04

Facebook Metro Express by Larsen & Toubro

🌐 www.mauritius-metro.com



**LARSEN & TOUBRO**