



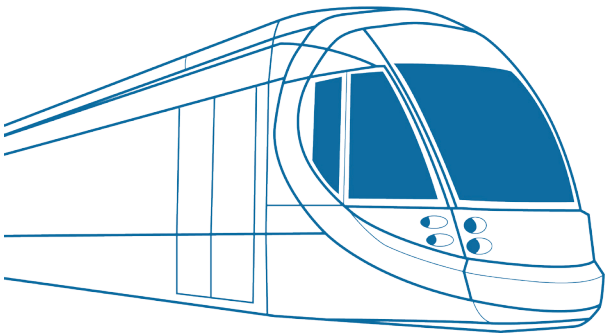
Barkly



Rose-Hill Bus Station



La Butte



Metro Works

Progress Updates

May 2018

The first phase of the Metro Express works is continuously taking shape and progressing. Larsen & Toubro prepares for piling and foundation works, to start in the next few weeks at Port-Louis, La Butte, GRNW and Rose-Hill regions, which will accommodate elevated structures.

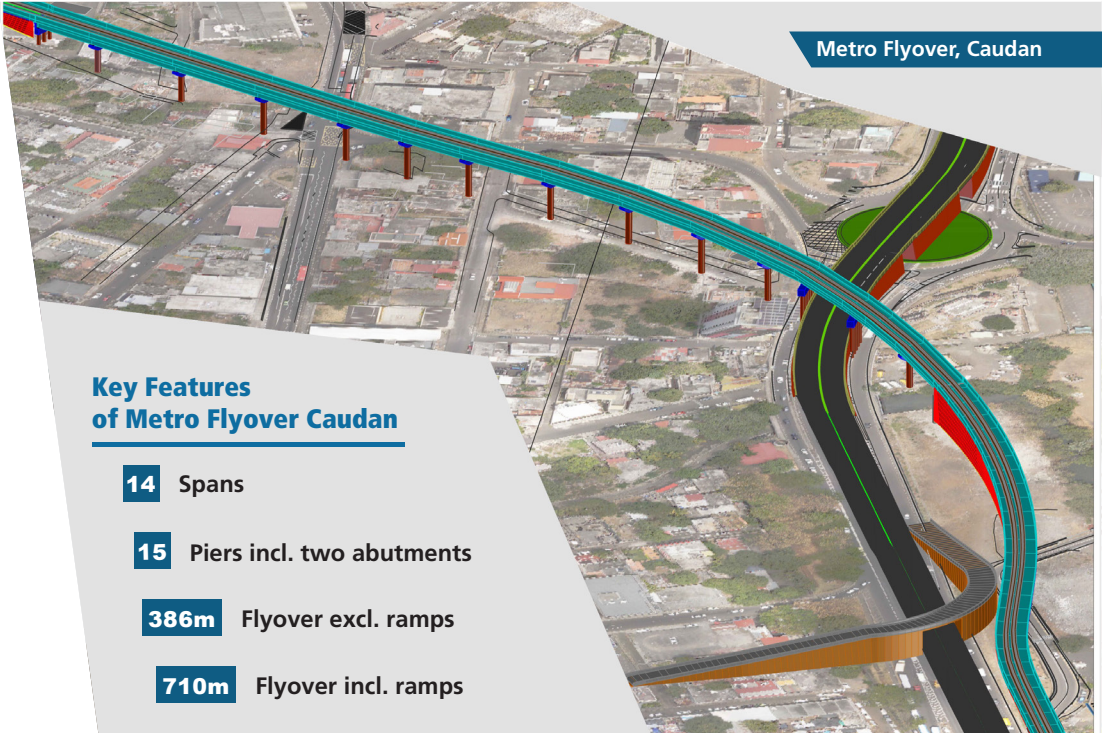
The ride between Port-Louis and Rose-Hill in the Metro Express will soon be a reality in Mauritius.

www.Lntecc.com

www.mauritiusmetroexpress.mu



Piling at Caudan



Metro Flyover, Caudan

Key Features of Metro Flyover Caudan

- 14 Spans
- 15 Piers incl. two abutments
- 386m Flyover excl. ramps
- 710m Flyover incl. ramps

Site visit by Minister of Public Infrastructure & Land Transport
Metro Flyover Piling Works, Saturday 26 May 2018

